

The First and *Only* OTC Syphilis Test Enabling Public Health Outreach Testing

The Challenge: Syphilis is a Public Health Crisis

Rates have surged 80% from 2018 to 2022, hitting the highest levels since the 1950s¹.



Vulnerable Populations at Risk: Underrepresented populations, including MSM, Black/African Americans, and American Indian/Alaska Native groups, encounter significant barriers to consistent care, which leads to higher infection rates and delayed treatment.

Barriers to Testing and Treatment: Traditional testing methods require lab facilities and CLIA certification, creating obstacles in underserved communities, limiting access to timely diagnosis and care.

The Solution: First To Know[®] Syphilis Test

The First To Know[®] Syphilis Test is designed to support public health professionals with reliable and accessible testing:

- **Self-test Anytime, Anywhere:** Perform testing in any setting with just a simple finger-stick and one drop of blood.
- **Results in Minutes:** Get accurate results in just 15 minutes, allowing for immediate intervention.
- **Confidence in Every Result:** Ensuring confidence in every result with 93.4% positive predictive value and 99.5% negative predictive value.

Impact on Public Health:

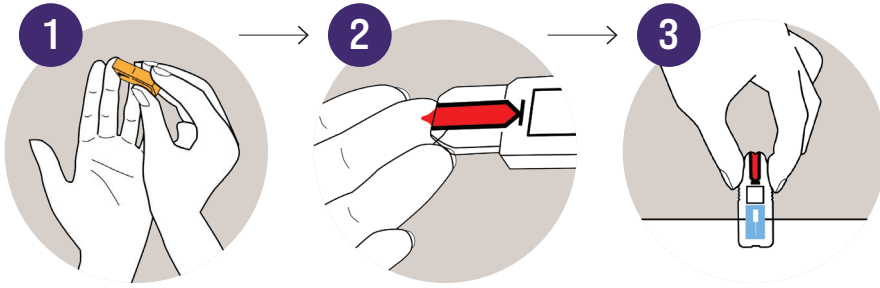
With syphilis rates on the rise, the First To Know[®] Syphilis Test is a crucial tool in combating this epidemic. Equip your team to test, treat, and reduce the spread of syphilis directly in your community.



REFERENCES

¹ <https://www.cdc.gov/nchhstp/newsroom/releases/2024/sti-surveillance-report-2022.html>

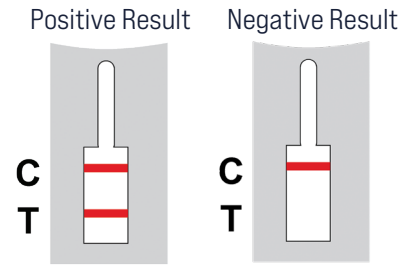
How First To Know[®] Syphilis Test Works



1
Prick your fingertip with the easy-activated lancet.

2
Collect one drop of blood using the test cartridge.

3
Tap the cartridge twice and lay it flat.



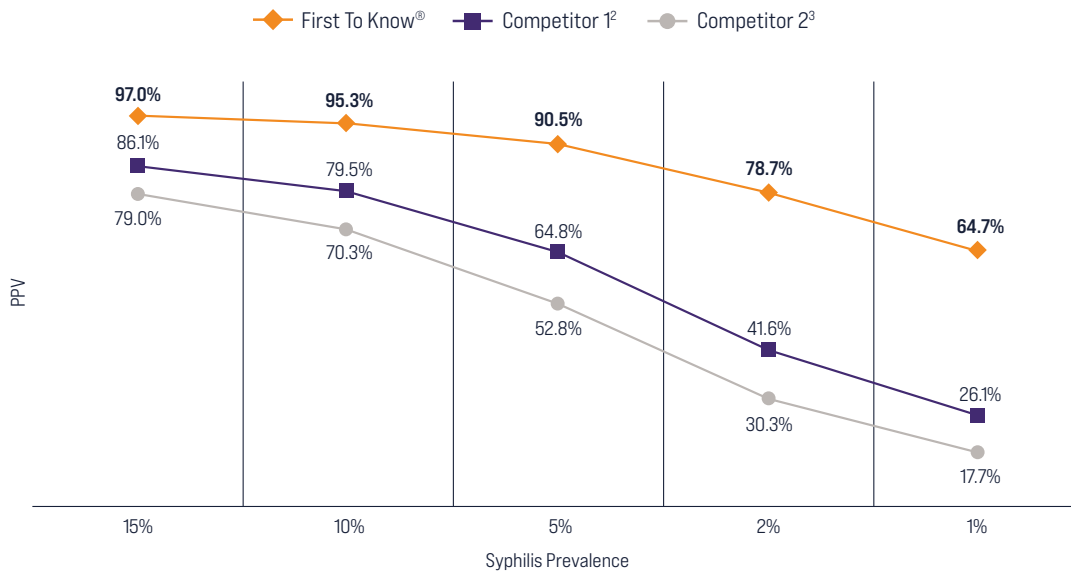
Read the result in just 15 minutes.

First To Know[®] Syphilis Test Outperforms Other POC Tests

Positive Predictive Value (PPV) is crucial in syphilis testing, indicating the likelihood of a true positive result. The First To Know[®] Syphilis Test delivers a higher PPV compared to other tests across various prevalence rates, providing reliable results even in low-prevalence areas.

Why Choose First To Know[®] Syphilis Test?

- **Consistently High Predictive Value:** Maintains reliable accuracy across all prevalence levels, outperforming other POC tests.
- **Accurate in Low-Prevalence Areas:** Minimize false positives, ensuring focused and effective treatment in communities with lower syphilis rates.



Visit firsttoknow.com to learn more and to contact us to see how we can support your public health initiatives.

Description/Quantity

First To Know[®] Syphilis Test / 1 Kit

Catalog No.

8057-1

REFERENCES

² https://diagnosticsdirect2u.com/wp-content/uploads/2024/04/DD_Syphilis-Health-Check-Control-Set-Sheet_2017_PL.pdf | ³ <https://chembio.com/products/dpp-hiv-syphilis-usa/>